

EHF Mastercoach 2018

2018 EHF "Rinck" Convention Master Coach and Licensing Course - 3rd Module

10 to 16 - 12 - 2018
in Paris, France



EHF Competence Academy & Network

Paul Landuré
FFHB National Trainer
EHF Lecturer



FFHB Talent Education's organization

FFHB organization:

« the federal performance way »

« how to go towards performance »»

period 2017-2021

« Professionnal Club's Handball Centre »
18-22 years old

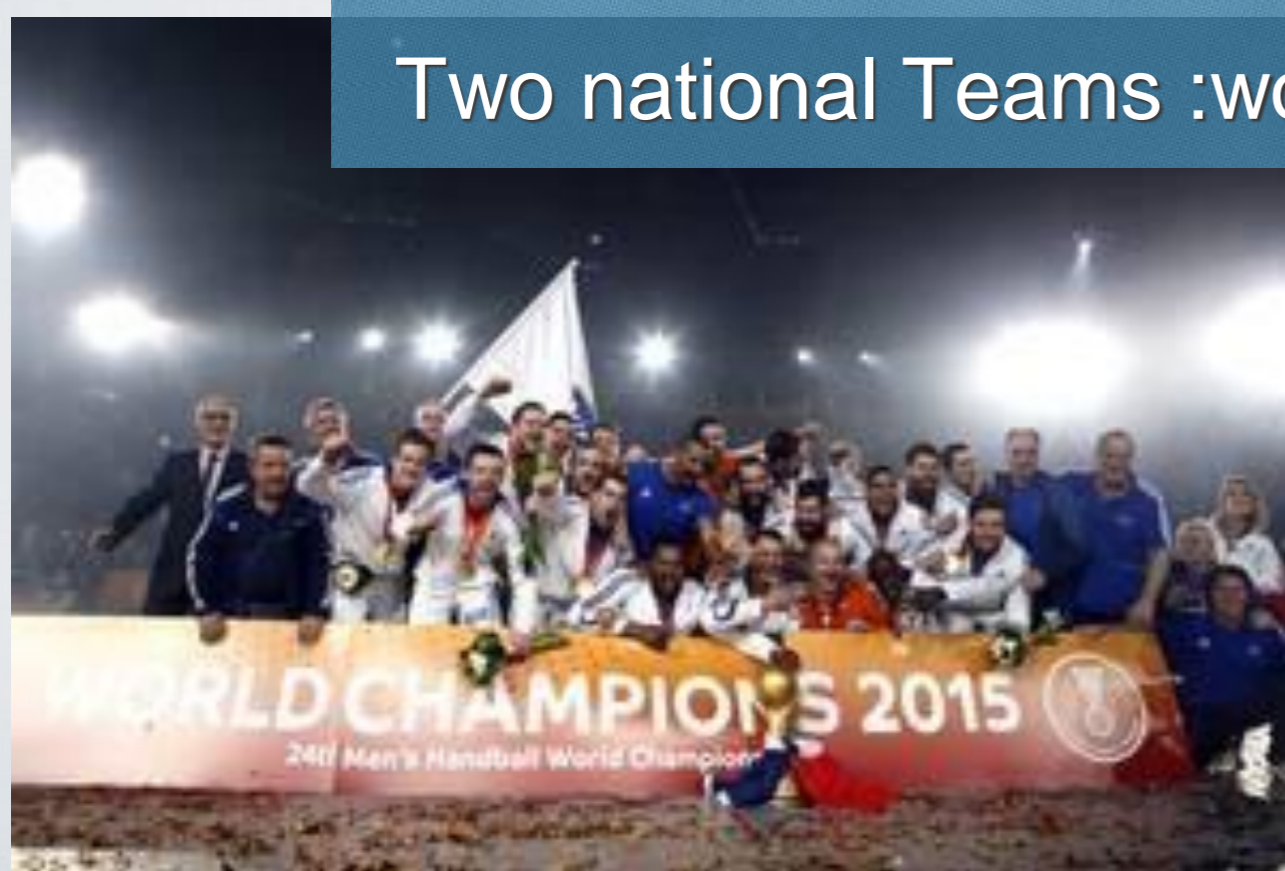


Men: OG's Title

Women: 1/4 Final

Two national teams
OG from Sydney 2000 to Rio 2016

Two national Teams :world champion 2017





VELUX®



EHF
CHAMPIONS
LEAGUE



2018
4 clubs FRA au FINAL 4



SPORT'S CODE since 2006

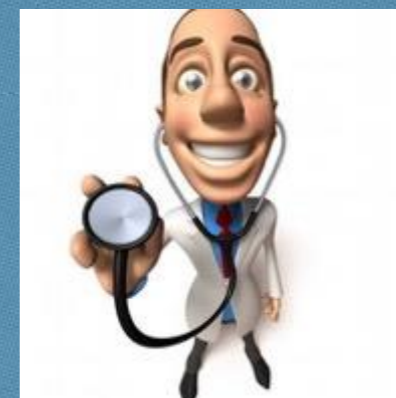
different SPORT's LAW since 1975

Professionnal Sports'law 2016 and 2017

cooperation between Elite handball partners in FFHB

current cooperation

Sports Agents



DTN- FFHB





LIGUE NATIONALE DE HANDBALL





LIDL STAR LIGUE LNH
LA LIDL STARLIGUE
EN EXCLUSIVITÉ SUR beIN SPORTS
beIN SPORTS

compétitions /LNH



TROPHÉES LNH
DU HANDBALL
beIN SPORTS

responsabilites'Pro League

Ligue pro : FFHB's delegation handball pro.
renewal 4 years

LNH :
Lidl Starligue and Proligue.

LNH : compétitions

LNH : marketing

PUBLIC PARTNERS



SOCIAL PARTNERS



Handball

540000 players and players

LNH: All clubs about 65 millions (1st div)
budget LNH 2 millions Euro

48 Talent's federal training center

25 professional club's training center

Budget D1 Men : 2 to 18 millions euros

Budget D1 women : 0.8 to 3- 4 million euros (soon more)

Budget FFHB : from 7 to 25 millions euros in 15 years

240 j pro players

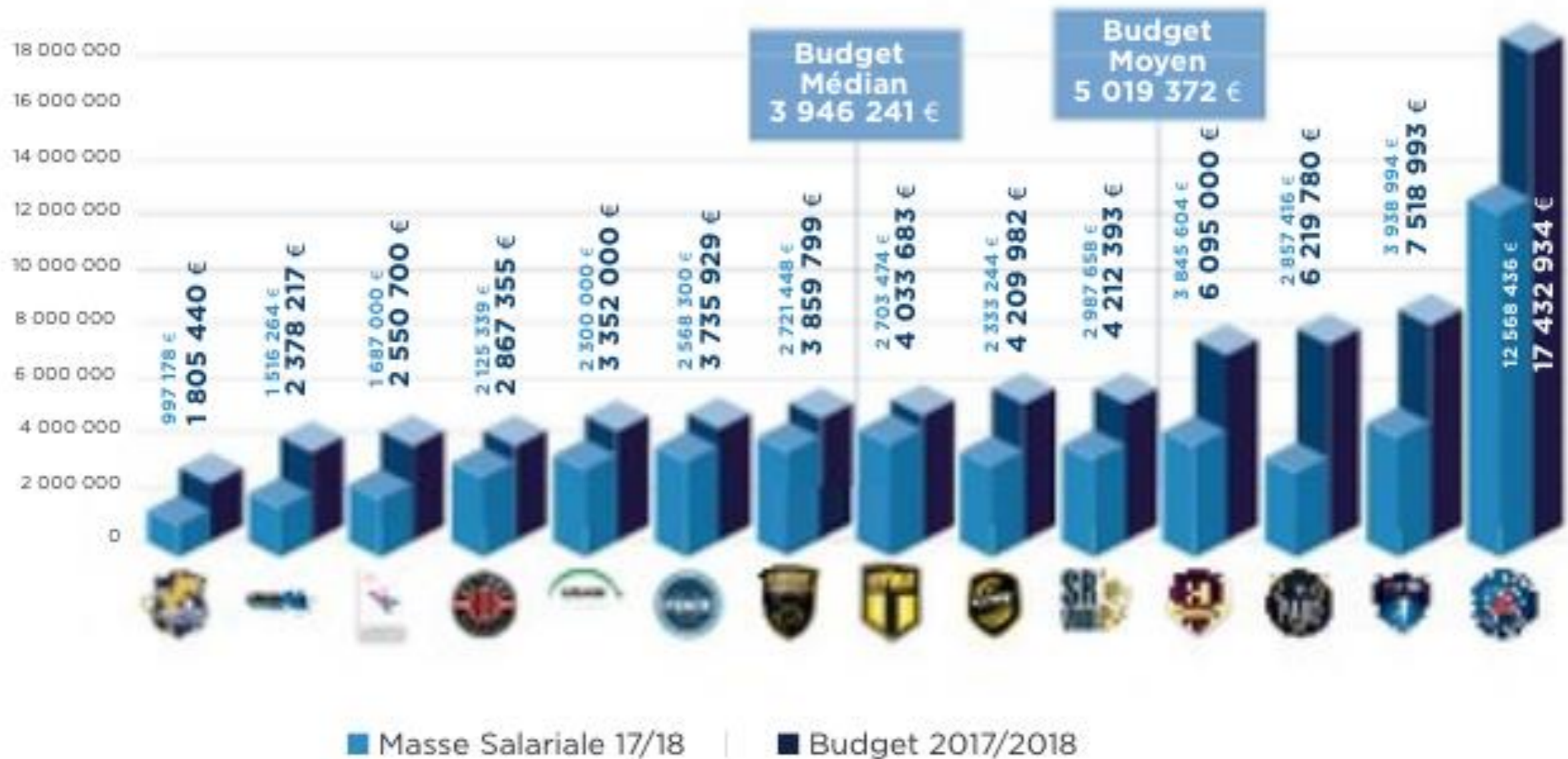
average: 15/club

90 pro. playerins

PROJECTION SUR LA SAISON 2017/2018

Les budgets 2017/2018 présentés ci-après sont ceux qui ont été produits par les clubs pour l'échéance du 15 octobre 2017 et sont susceptibles d'évoluer au cours de la saison. Les montants de masse salariale sont ceux qui ont été autorisés par la CNACG.

LES BUDGETS ET MASSES SALARIALES DE LIDL STARLIGUE 2017/2018



structures' cooperation towards performance

Cartographie



Cooperation between FFHB and the professional organization

Professionals Clubs Training Centers **are integrated into** the FFHB talent e

A cooperation between Talent's federal training center (14 to 18 years)

This cooperation **allows and secures the orientation of the potential play**

The staffs of the national teams and professional clubs cooperate **about the**

REQUIREMENTS' ANALYSIS FOR DETECTION

Analysis that covers over than 200 LNH players. (some years ago)

Over 50% of the players are over 190 cm.

Only 8% of players are less than 180 cm.

In the french population only 30% are over 180 cm and 8% are over 190

* in terms of laterality:

Only 14% of left-handed players in France.

Difficulties to "produce" left-handed player: 2008 Abati and then Burdet,

* in terms of explosive quality:

Abalo, Narcisse

* in terms of « tactical feeling » :

Guigou, ...

a phase of education's phase 14-18

Federal Training Center,
place to access towards the high level.

201!: 48 **Federal Training Centers** (14-18 year)
1974: 04 centers
*800 players/(ins).

an intensive training phase. 17-22 years

Professionals Clubs Training Centers administered by pro. clubs with FFHB

15 men : 135/140 players

12 women : 90/110 players

Talent FFHB Education System

Handball

Club

Pro Clubs

1st/2nd

19 Regions

100 departments

Top level Player

TEAM FRANCE A

26 prof club handball Centers
Men Women

48 Federal Handball Centers
Men and Women

200 Centers spec handball (at school)
boys and girls training 2x/week

detection 1000 players/year

18-22 ans

14-18 ans

12-15 ans

Elite pro. confirmation intensive preparation

Elite education profile

detection/basics

continuing trainer's education

courses' program

Participation inside the (youth to junior) national teams' staff

A national course for responsables of federal training centers.

A national course for responsible of prof club training centers

Training courses continue for managers Training Centre

Evaluation inside each Federal and Prof club center.

- official accreditation Sport Min. / FFHB

15 professional club training centers : 135/140 players

12 professional club training centers : 100/110 players

total : 230/240 players : 17 to U22.

- integrated into the official FFHB Education System.

- free decision by the club.

to prepare and to educate the players for the National Teams and the professional

- a sport's education agreement

- a center (off. agreement) with a special organization

- a personalized control made by FFHB (DTN)

- priority to prepare for the LNH and LFH and National teams.

concentration of the elite starting from 17-18 years.

training center for clubs LNH and LFH.

training 8 to 12h/week

studies are obligatory.

possibility: two players U18 authorized (s) by DTN (derogation)



professional club training center

stats 2015:

men:

since 2002,

380 educated players professional club training centers

300 educated players in federal training centers

women

since 2004,

200 educated players in professional club training centers

180 educated players in federal training centers

The player must have the training agreement approved by the FFHB.
Education's rights

« The home grown player »

new rule: to protect the French Education System.
discussion between FFHB and partners.

enforce a number of homegrown players in prof. clubs (only LNH).

profile:

- club : 5 years player's license, before 23 years in french club
- or federal training center (3 years min)
- or professional club's training center (3 years min)

discussion between the partners to organize soon (2019...)

- depend on the number of pro players/team: 50% basis.
- match report (14 players=4/5 Home grown players min).



Saison 2018 / 2019 au 5 septembre 18

	LSL	% de JFL sur effectif de référence	Pro	Stag	Nb de JFL sur effectif de référence	Nb JFL hors effect. de réf. (éq. réserve, CFCP)	Total JFL "utilisables"
1	Aix	✔ 44,44%	17	1	8	17	25
2	Cesson-Rennes	✔ 58,82%	15	2	10	15	25
3	Chambéry	✔ 73,33%	15	0	11	14	25
4	Dunkerque	✔ 50,00%	14	2	8	8	16
5	Ivry	✔ 50,00%	14	0	7	12	19
6	Istres	✔ 66,67%	15		10	10	20
7	Massy						
8	Montpellier	✔ 60,00%	19	1	12	14	26
9	Nantes	✔ 68,42%	18	1	13	11	24
10	Nîmes	✔ 88,24%	17	0	15	20	35
11	Paris	✔ 69,23%	16	10	18	1	19
12	Pontaul Combault	✔ 62,50%	16		10	5	15
13	Saran						
14	St Raphaël	✔ 57,14%	14	0	8	14	22
15	Toulouse	✔ 46,67%	15	0	7	14	21
16	Tremblay	✘ 35,71%	14	0	5	12	17
	Moyenne :	59,37%					
	Médiane :	59,41%					
	Nb en dessous de 40%	1					
	Nb en dessous de 30%	0					

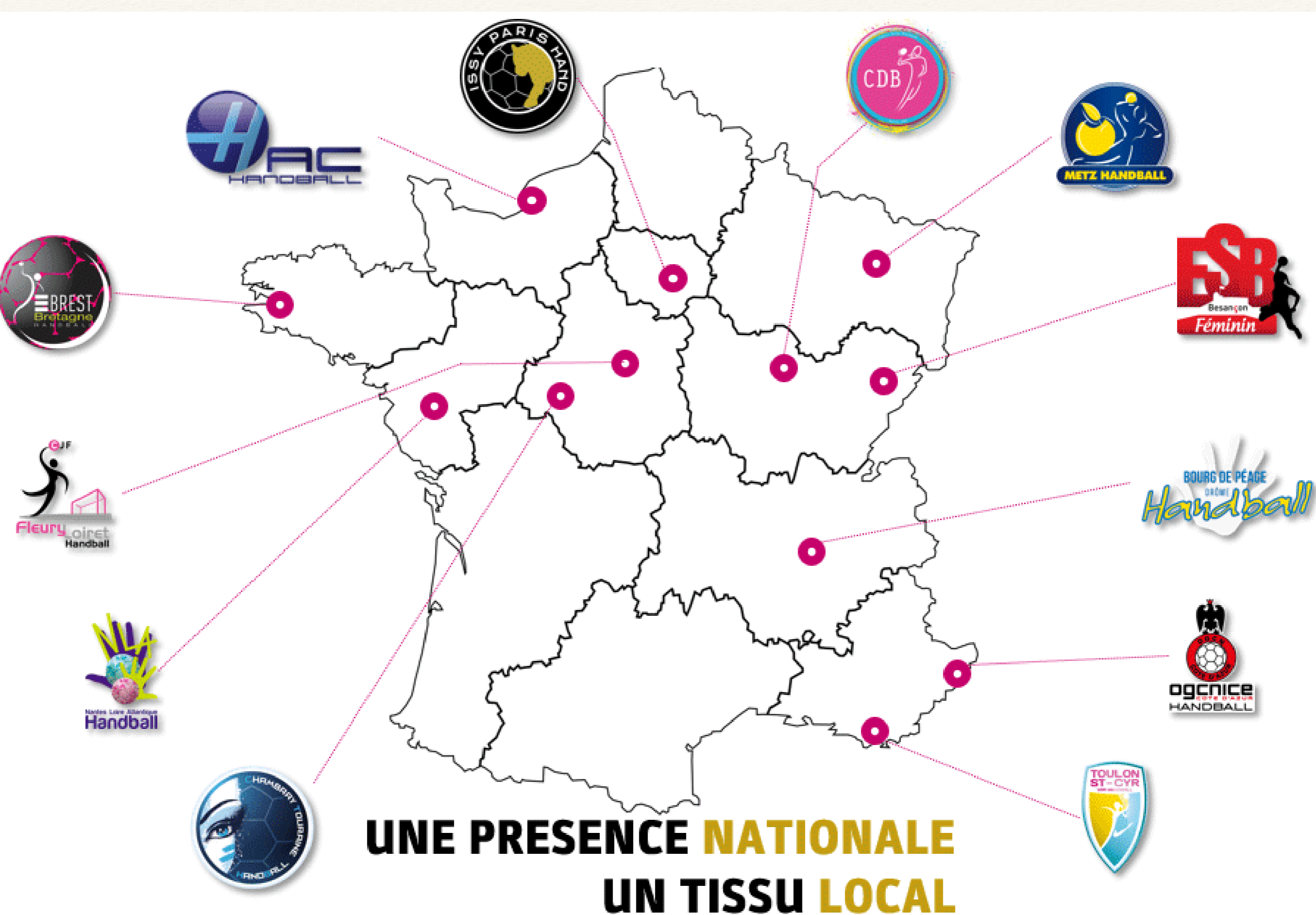


LFH

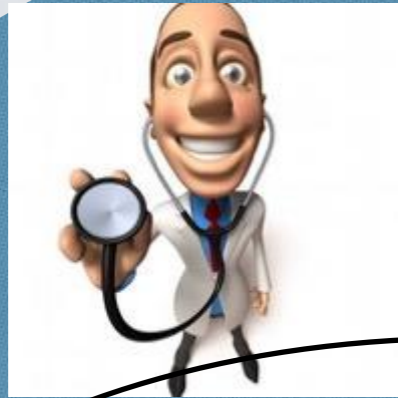
LIGUE FÉMININE
HANDBALL







cooperation in women handball area



sport's agent



DTN- FFHB





145

JOUEUSES PRO
À TEMPS PLEIN

ET **76** JOUEUSES
EN CENTRE DE FORMATION

24 NATIONALITÉS
REPRÉSENTÉES
(HORS FRANÇAISE)

DONT: = 9 = 6
 = 4
 = 3

38
RETRANSMISSIONS
DES CLUBS LFH

+236 000
SPECTATEURS

2 615
CAPACITÉ MOYENNE
DES SALLES



BUDGET CONSOLIDÉ DES 12 CLUBS :

20,5M€

SALAIRE MOYEN DES JOUEUSES PRO
(HORS AVANTAGES EN NATURE) :

2 690 €

SALAIRE MOYEN
DES ENTRAÎNEURS PRO
(HORS AVANTAGES EN NATURE) :

4 120 €

LIGUE
FÉMININE
SPORTIVE **#1**
SUR LES RÉSEAUX SOCIAUX

121 804

42 281 FOLLOWERS*

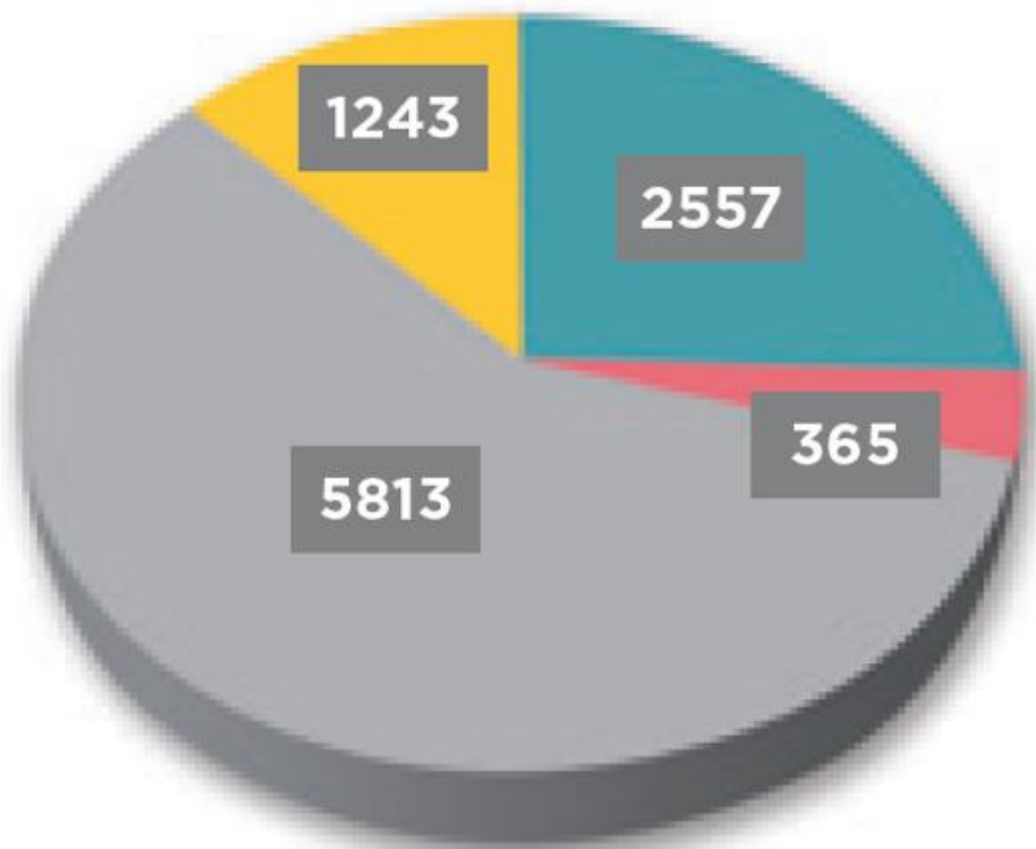
37 445 ABONNÉS*

* CUMUL LFH + 12 CLUBS



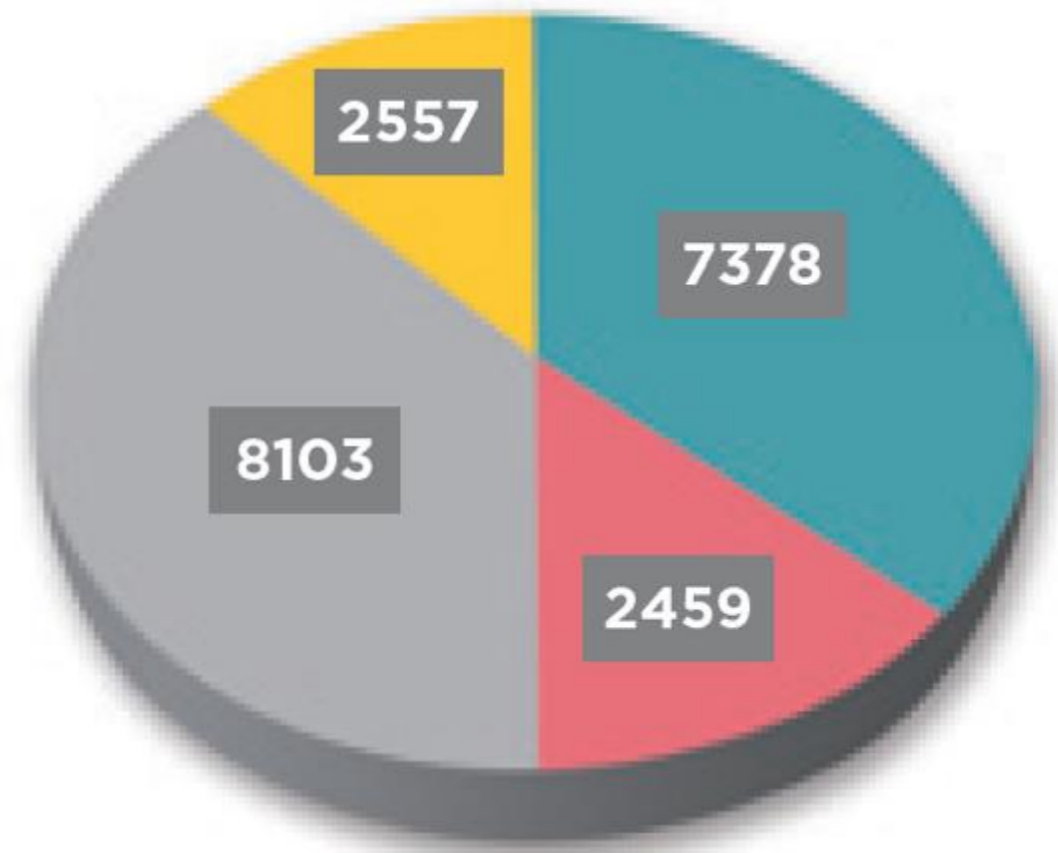
Données établies en 01/02/2018

BUDGETS PRÉVISIONNELS CONSOLIDÉS 2009-2010



TOTAL 10 CLUBS : **9 978 K€**

BUDGETS PRÉVISIONNELS CONSOLIDÉS 2017-2018



TOTAL 12 CLUBS : **20 497 K€**



140

matches de championnat

38

retransmissions TV

- Le diffuseur beIN SPORTS a diffusé **14 rencontres du championnat LFH** (8 matches de saison régulière, ainsi que les demi-finales et finales des playoffs).
- beIN SPORTS a aussi retransmis les **14 matchs** de Metz en Ligue des Champions, ainsi que **4 rencontres** de Coupe de France.
- L'Equipe 21 a diffusé **5 matchs** de Nantes et Brest en Coupe EHF.
- Enfin, Tebeo a diffusé **1 match** de championnat.

+ de 236 000

spectateurs

7 112

butts marqués

585

le + de butts marqués cette saison,
par METZ*

437

le - de butts encaissés cette saison,
par METZ et BREST*



Pour la saison 2017-2018,
le diffuseur national beIN Sports diffusera la
Ligue des Champions ainsi que certains matchs
du championnat LFH.



STATS LFH live



HANDVISION

au service du Handball



Selon vous, pour chacune des disciplines suivantes, vous

direz qu'il y en a trop à la télévision, suffisamment à la télévision ou pas assez à la télévision?

Base : A tous

Résultats en %

■ Pas assez à la télévision

■ Suffisamment à la télévision

...s le cadre de cette étude révèlent être en attente de davantage de sport

football féminin arrive en tête avec 47% suivi par le **handball féminin** à

ès clairement les français souhaitent davantage voir ces disciplines à la T

