



# MOVING PATHS ON THE COURT

Used and extend by Peter Hansson / EHF Lecturer  
11<sup>th</sup> EHF Referee Candidates Course  
12-26<sup>th</sup> December 2012 in St.Gallen, Switzerland

Made by Mona Förström / EHF Lecturer  
8<sup>th</sup> EHF Referee Candidates Course  
June 14-20<sup>th</sup> 2010 in Nikosia

European Handball Federation

---

# Handball nowadays – new challenge for referees



- More than 60 attacks for each team per game
- Playing time for attack approx. 30 sec

**We need more high physical and psychological demand for referees!**

# MOVING PATH ON THE COURT

- **Running paths (inside, outside, backwards)**
  - As soon as possible out of the way
  - Never loose eye contact
  - Turn 90 degrees (please not "270 degrees")
  - If possible along the sideline / sometimes outside
  - Appr. 9m turn 90 degrees
  - Only in hectic situations backwards (better never)



# MOVING PATH ON THE COURT

- **Behaviour during a fast break**
  - As soon as possible out of the way of the players
  - More important to overlook – than to run quickly
  - If necessary, let the players pass
  - Analyse the situation and then take your position



# MOVING PATH ON THE COURT

- Positioning if there is a quick throw-off
  - Field referee should run near the sideline (better overview)

# Correct referee's position during throw-off



# Moving - mistakes



**Situation: changing ball possession = not back run !**

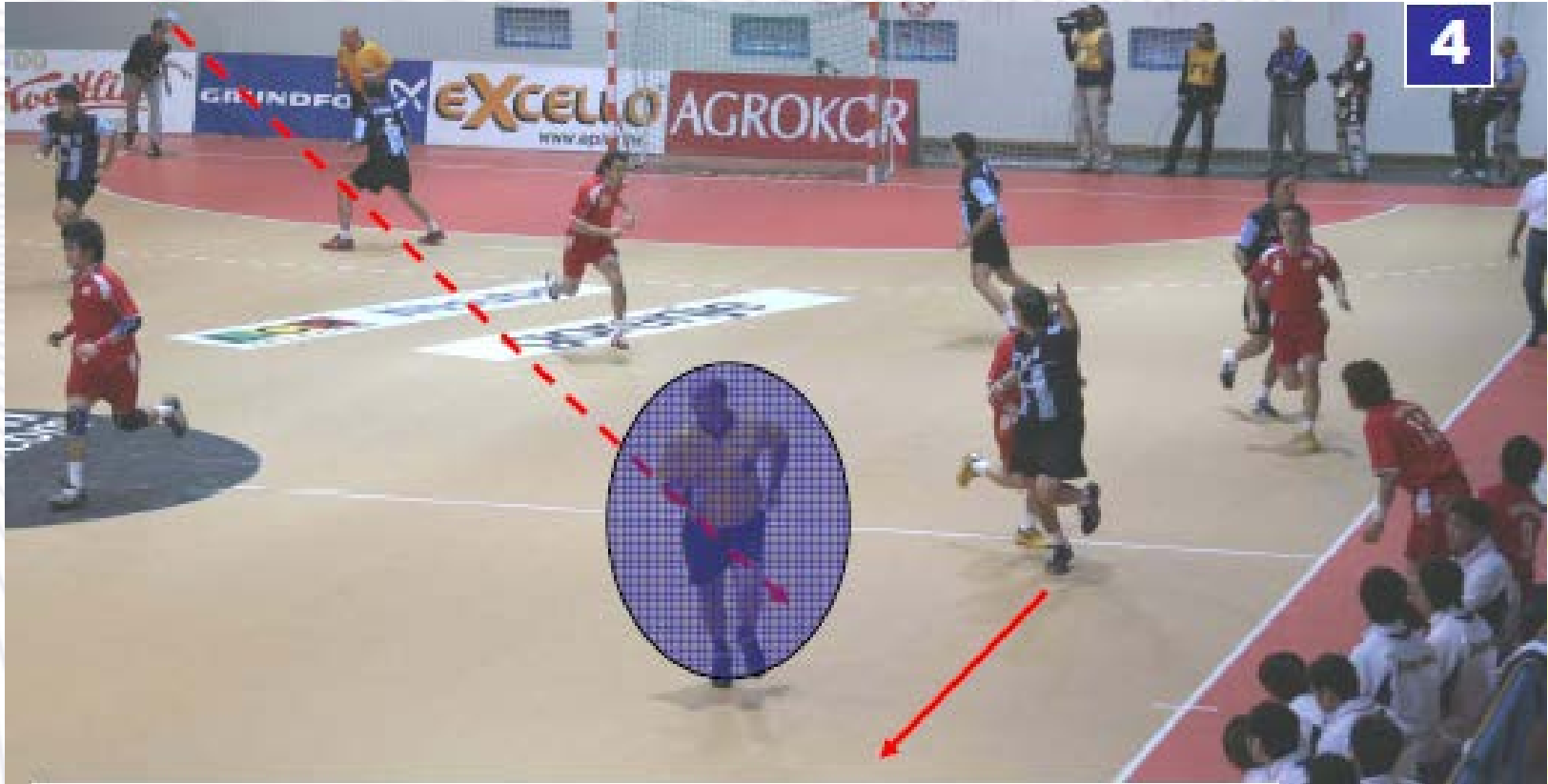
# Moving - mistakes



**Incorrect turn !**



# Moving - mistakes



**Run along the sideline / sometimes outside  
If necessary – don't move, observe only, it is more  
Important to keep vision than quickly turn back**

# Moving - mistakes



**Attention: prevent moving in the wrong path at fast breaks!**

# Moving - mistakes



**Incorrect turn!**

# Moving - mistakes



**Referees have to prevent crashing into players during fast breaks!**

**1**

# Moving - mistakes

Referees have to prevent crashing into players during fast breaks!

2



# Moving - mistakes



**Never turn around after goal!**

# Moving - mistakes



**Never turn around after goal!**

# Correct moving during counterattack



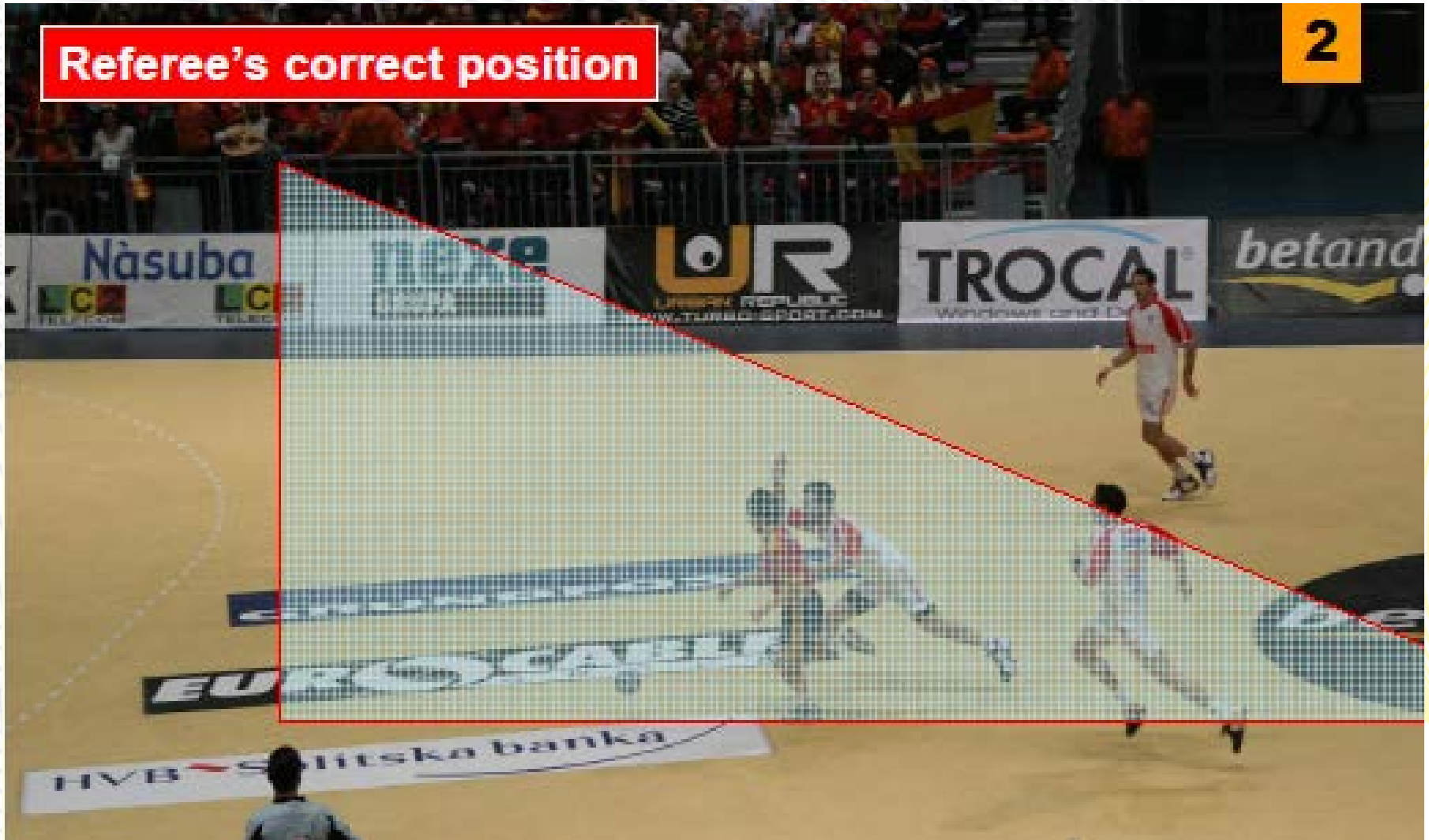
**Run forward and observe the situation!**



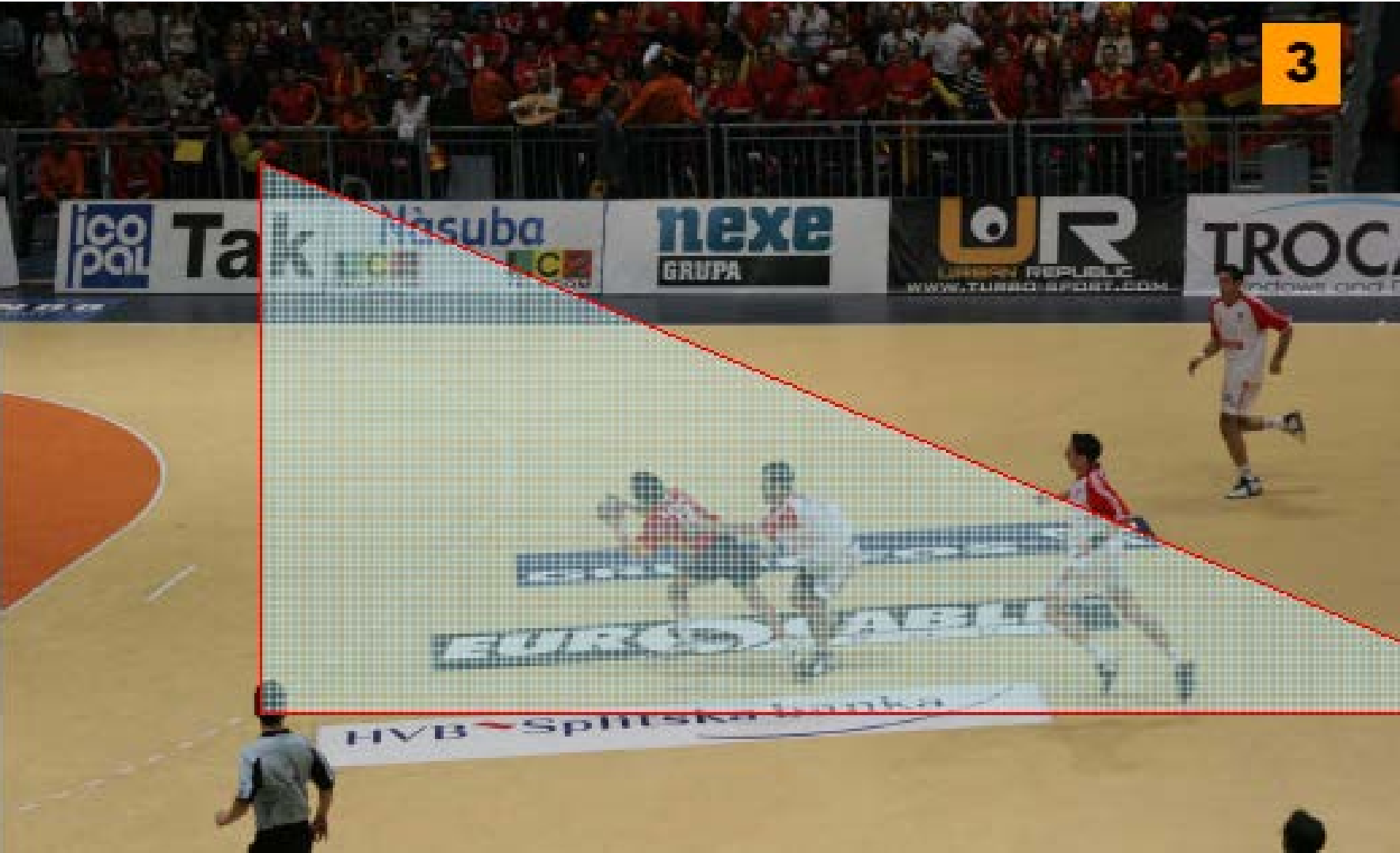
# Correct moving during counterattack

Referee's correct position

2



# Correct moving during fast break

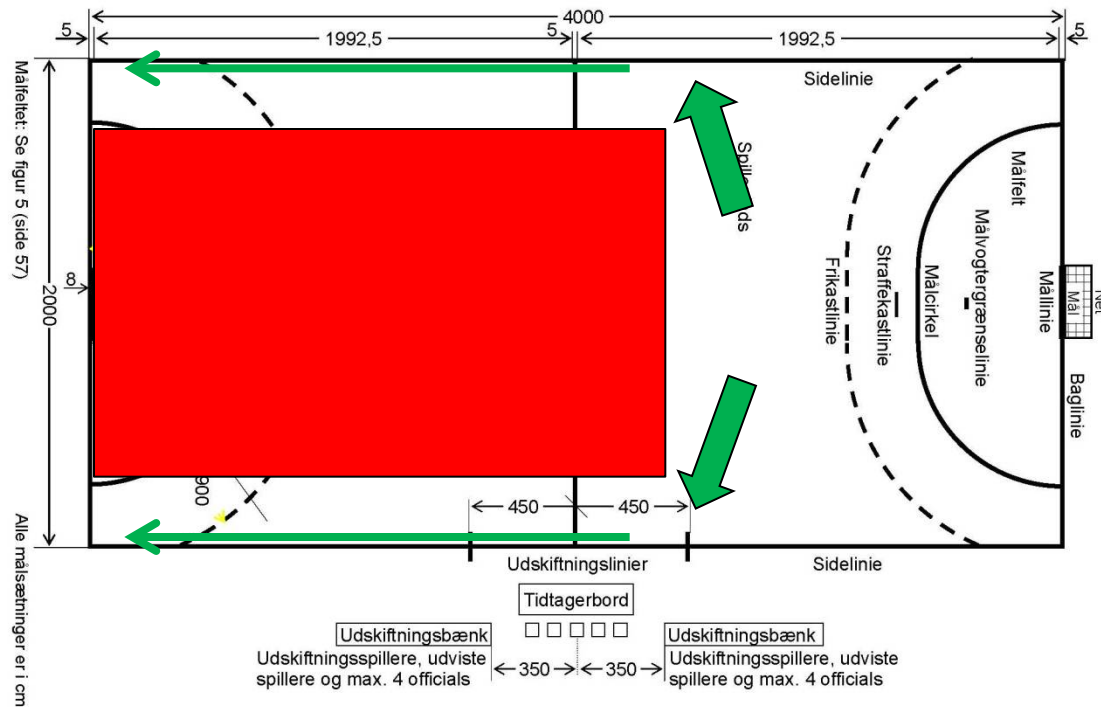


# Correct moving during fast break



HVB Sptiška banka

# Don't be a player!



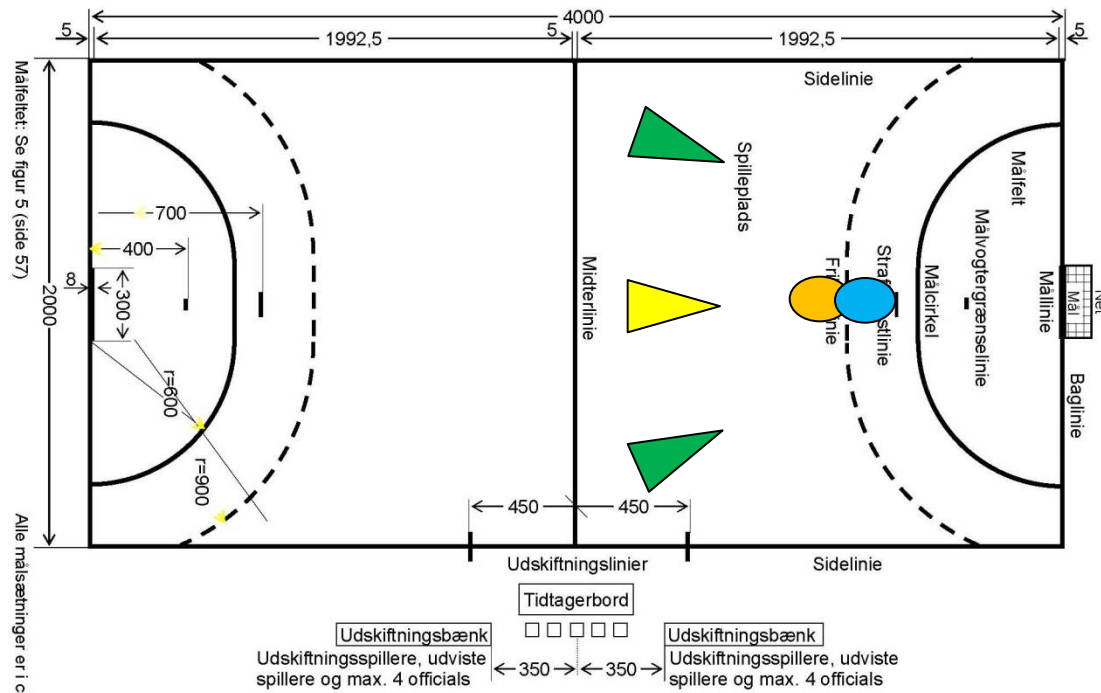
Figur 1: Håndboldbanen



# Teamwork

- Don't wait too long to run back
- Trust your partner !!!

# Remember !!!



Figur 1: Håndboldbanen

# Remember !!!

- [..\..\ Videoklipp\ 3 TUN-FRA Situation 2.mpg](#)
- [..\..\ Videoklipp\ 3 TUN-FRA Situation 2 Svar.mpg](#)



[..\..\ Videoklipp\ 2 TUN-FRA Situation 3.mpg](#)

# Couple = Teamwork

- Never better than the weakest link
- Always you together, no one is the best in the couple
- Discuss, but no angry discussion
- Find the right way in your cooperation
- Look like a couple when you enter the arena





# Couple = Teamwork

- [..\..\ Videoklipp\ 0 SLO-GER EM 2004 Red Card Situation.mpg](#)



# Questions