

Referees & Coaches expectations & points of view



**Referees are specialists for the rules
Coaches are specialists for tactics**

**... but Coaches need to know the rules
and Referees need to have some basic
knowledge of tactics**

Referees & Coaches expectations & points of view



Referees should be prepared for each match

- ❖ **what teams are playing?**
- ❖ **is there any importance in the match?**
- ❖ **equal worth of all matches**
male/female / Champions-League/-Trophy

Referees & Coaches expectations & points of view



Referees should understand the Coaches p.o.v.

- ❖ **they know their players & their moves**
- ❖ **they have a strategy for the match**
- ❖ **they know the weak-points & problems**
- ❖ **they want to influence sometimes**

Referees & Coaches expectations & points of view



Referees should be able to communicate

- ❖ **before the match:**
introduction, technical meeting
- ❖ **during the match:**
accept coaches personality, reduce stress
- ❖ **after the match:**
hand-shake, rational analysis

Referees & Coaches expectations & points of view



Coaches expect from the Referees

- ❖ **Decisions have to be consistent throughout the match.
The criteria should not be changed during the match.
Keep the line of refereeing!**
- ❖ **Protection of the players from rough play and injuries.**

Referees & Coaches expectations & points of view



Actual problems for Referees & Coaches

- ❖ **Steps**
- ❖ **Passive play**
- ❖ **Entering the goal-area** (attacker with/without ball; defender)

Referees & Coaches expectations & points of view



Actual problems for Referees & Coaches

- ❖ **Steps**
- ❖ **Passive play**
- ❖ **Entering the goal-area** (attacker with/without ball; defender)
- ❖ **Fighting for the better position (pivot)**
- ❖ **Hollywood-actions** (e.g to stop opponents fast-break)

Referees & Coaches expectations & points of view



Actual problems for Referees & Coaches

- ❖ **Advantage depending on the used defence-system**
 - **open defence**
 - **closed defence**

Referees & Coaches expectations & points of view



Actual problems for Referees & Coaches

- ❖ **Advantage depending on the used defence-system**
 - open defence
 - closed defence
- ❖ **movements to the gap 1/2**

Referees & Coaches expectations & points of view



➤ **space-structure:** **basic principles in attack**

- ❖ **open central area**
- ❖ **first way for the ballpossesor**
- ❖ **safety behind the ballpossesor**
- ❖ **shifting the play to the other side**

Referees & Coaches expectations & points of view



➤ space-structure: basic principles in attack

❖ open central area

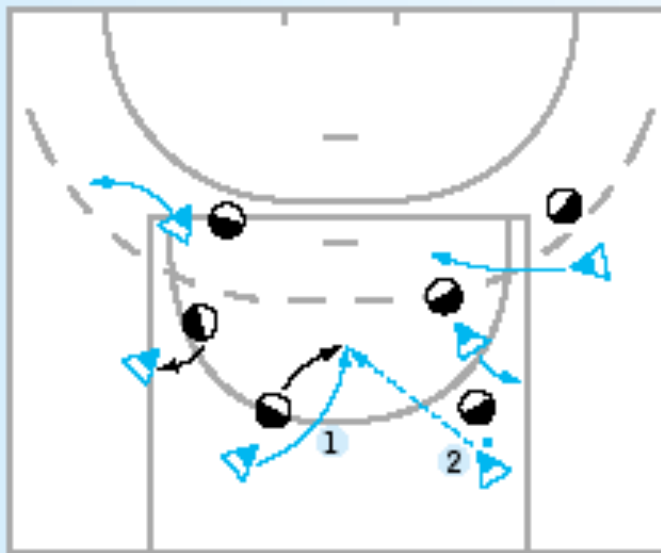


Abb. 1a: Angreifer in diesem Raum sind gefährlich; ihn deshalb nicht „verstellen“, sondern immer wieder hineinlaufen.

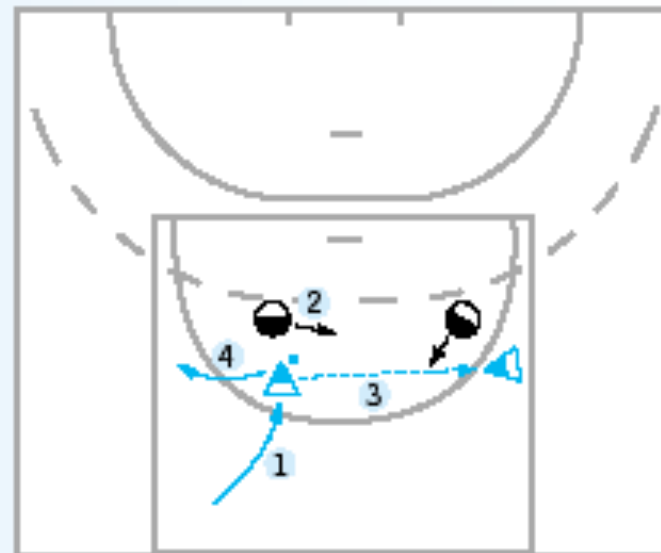


Abb. 1b: Die gefährliche Zone möglichst „weg vom Ball“ immer wieder verlassen, um neu hineinstarten zu können.

Referees & Coaches expectations & points of view



➤ space-structure: basic principles in attack

❖ first way for the ballpossessor

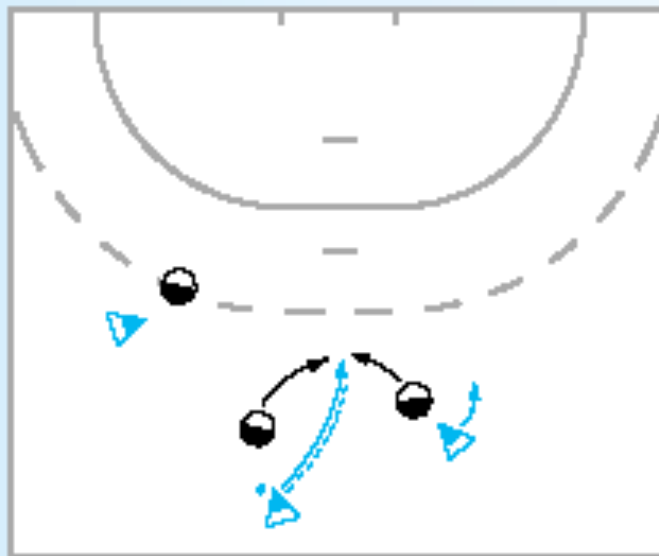


Abb. 2a: „Vorfahrt für den Ballführer“ ist ein Gebot, d. h. der Ballführer muß mit möglichst viel Tempo Richtung Tor ziehen.

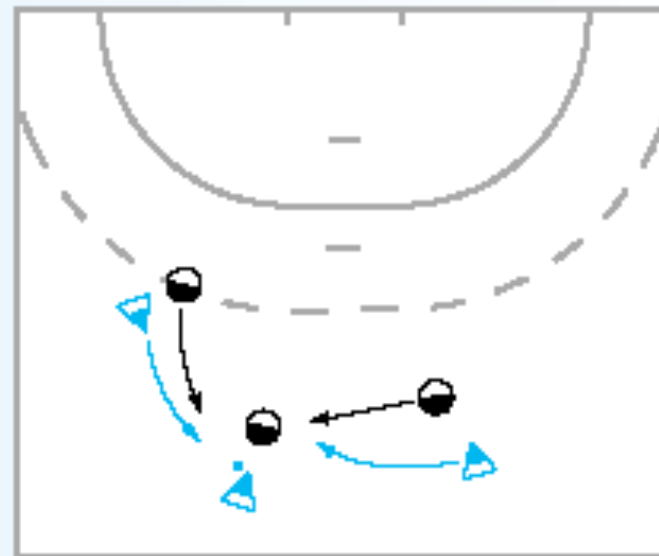


Abb. 2b: Zögerliche Ballführer verursachen eine „Spielertraubenbildung“.

Referees & Coaches expectations & points of view



➤ **space-structure:** **basic principles in attack**

❖ **safety behind the ballpossesor**

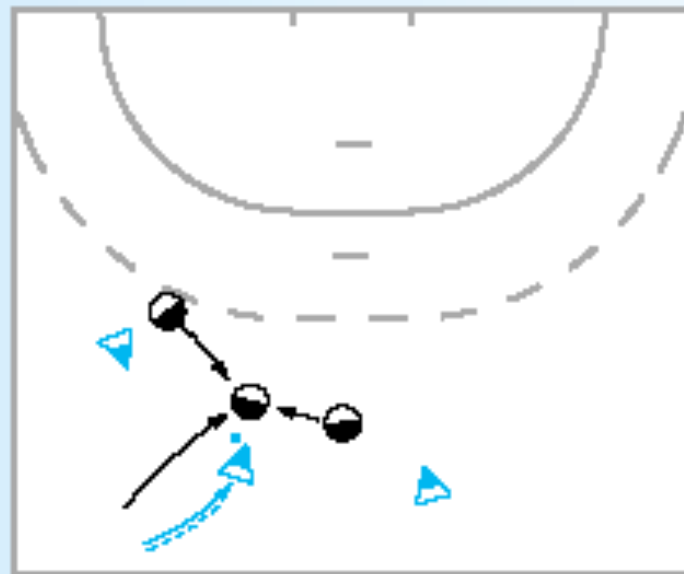


Abb. 3a: Dem schnell dribbelnden Ballhalter stellen sich Abwehrspieler in den Weg.

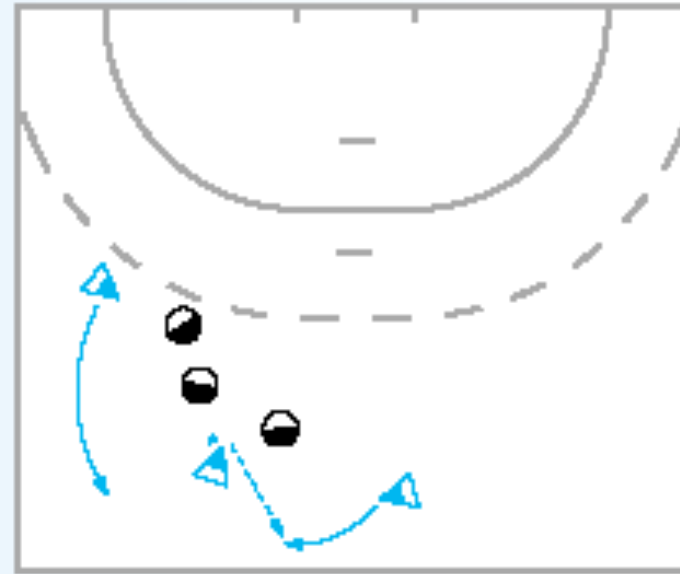


Abb. 3b: Die Hilfe für den in die Bredouille geratenen Spieler muß von hinten kommen.

Referees & Coaches expectations & points of view



➤ space-structure: basic principles in attack

❖ shifting the play to the other side

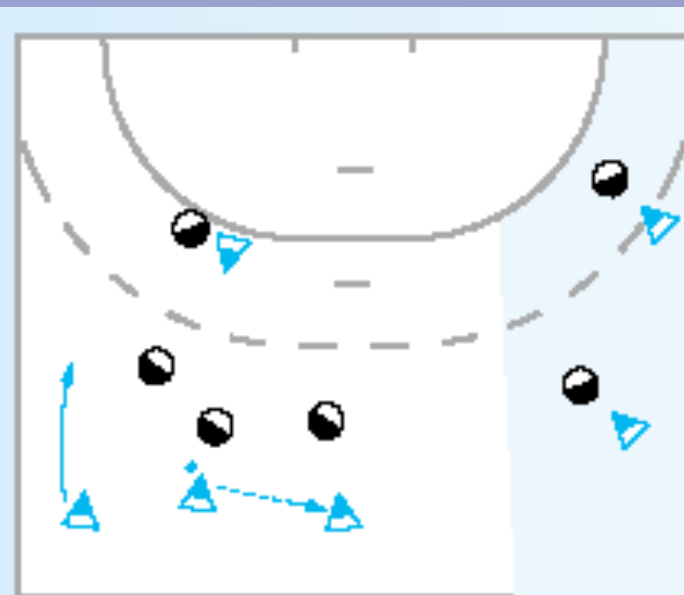


Abb. 4a: Gegen die Verdichtung am Ballort hilft die Spielverlagerung.

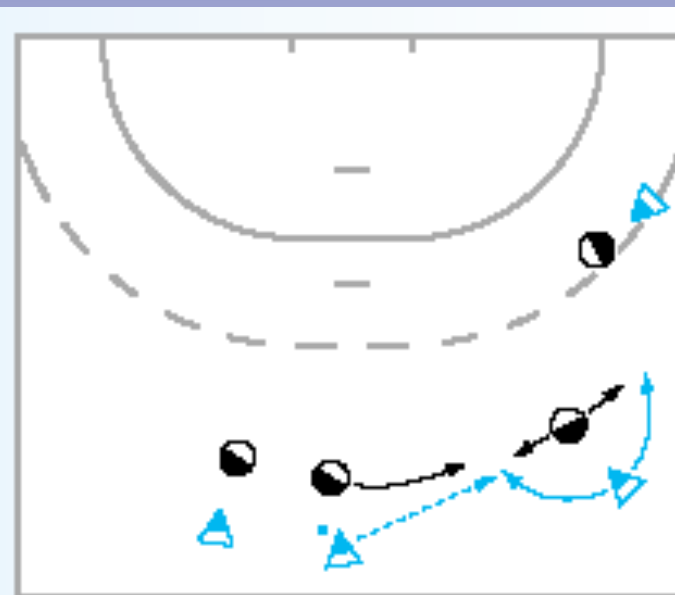


Abb. 4b: Lange Pässe sind gefährlich – sicherer sind mehrere Kurzpässe.

Referees & Coaches expectations & points of view

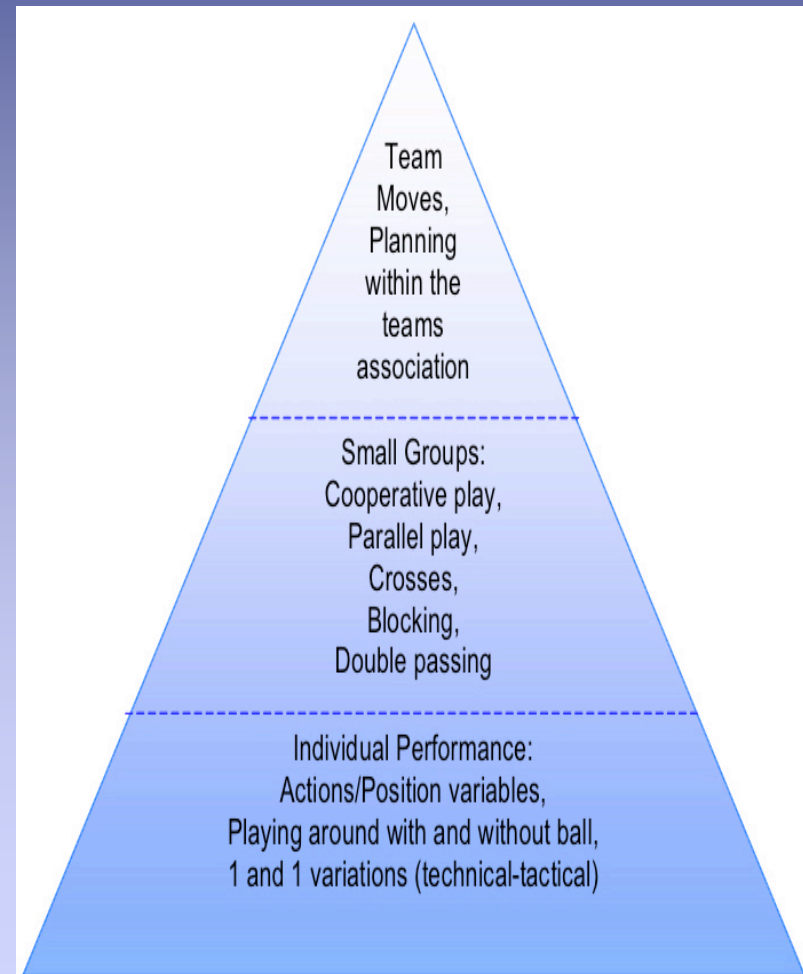


➤ playing-structure:

❖ **team-tactics**

❖ **group-cooperation**

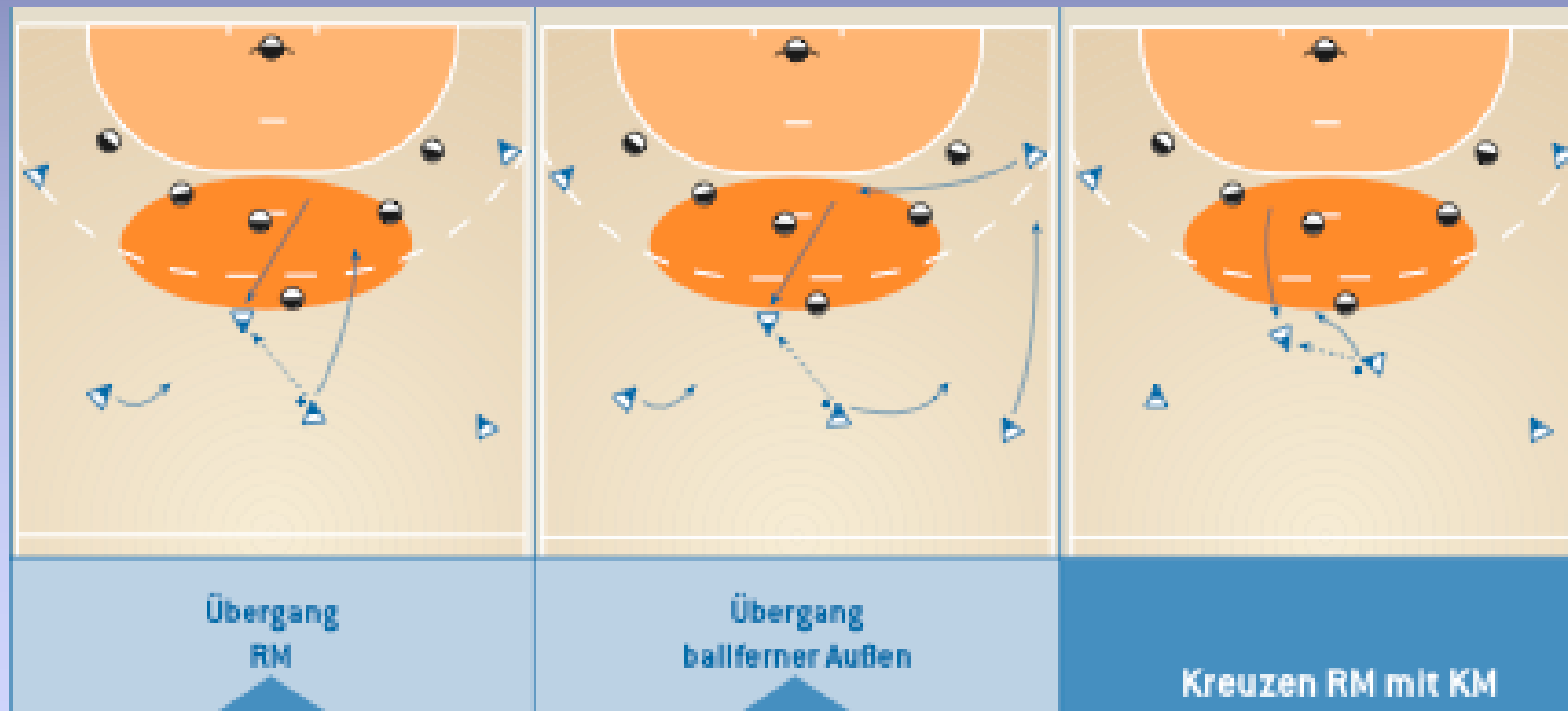
❖ **individual play**



Referees & Coaches expectations & points of view



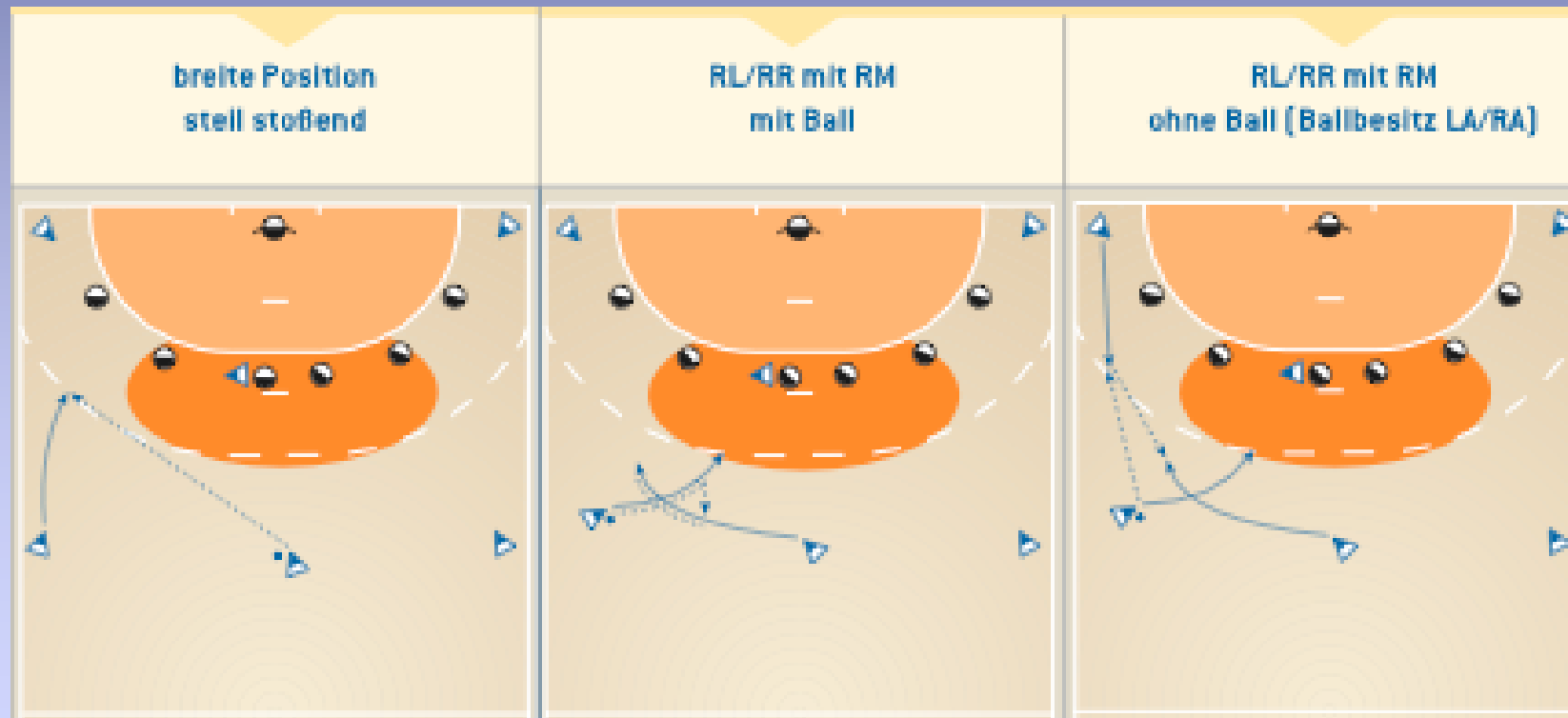
- **playing-structure:**
 - ❖ **open central area (1)**



Referees & Coaches expectations & points of view



- **playing-structure:**
 - ❖ **open central area (2)**



Referees & Coaches expectations & points of view



➤ **comparison man/women:**

- ❖ **athletics:** **power - agility**
- ❖ **technical skills:** **nearly same level**
- ❖ **tactical systems:** **all defence-systems**
attack with big pivot
attack without wings (men)
attack based on group-cooperation