



NEW OBSERVATION SHEET



By: Sándor Andorka





Fair play / Neutrality

Treating all players and officials of both teams absolutely neutral is important.

Refs cooperation / Signals

Good team work with internal signals and clear signalling to the players





Ball handling

Technical faults like wrong dribbling, foot-play, 3sec, violation.

Offensive faults

Rule infringements of the offensive player with and without ball possession.





Goal area / Defence

Distinction between violations committed deliberately and / or systematically and such not on purpose during 1 on 1 situations

Goal area / Offence

Violation when aiming at the ball, entering during 1 on 1 situations, landed shots, stepping / falling inside before releasing the ball.



7m decisions

Correct restitution of a clear chance of scoring

Steps

Correction of all kinds of moving

Invalid sores

Scores following any rule violation of the scorer. Note that this item does correspond with at least one of those mentioned above.



Passive play

Correct application of signals and calls in term of rules and idea of the game and the situation.

Time - out

Reaction and application in dangerous and / or disputable situations. Reaction against unforeseen interruptions and delays.



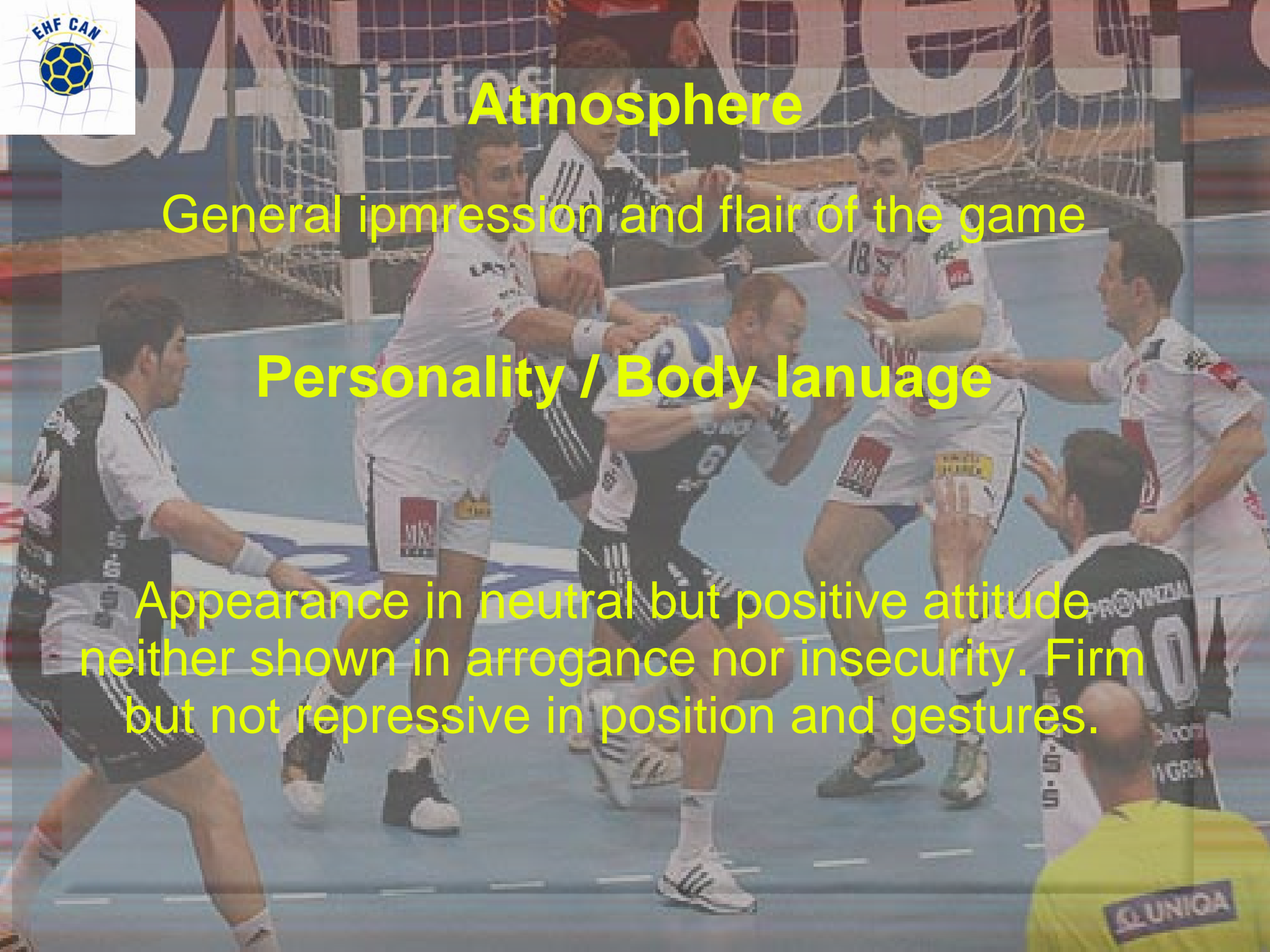


Atmosphere

General impression and flair of the game

Personality / Body language

Appearance in neutral but positive attitude
neither shown in arrogance nor insecurity. Firm
but not repressive in position and gestures.





Progressive punishment

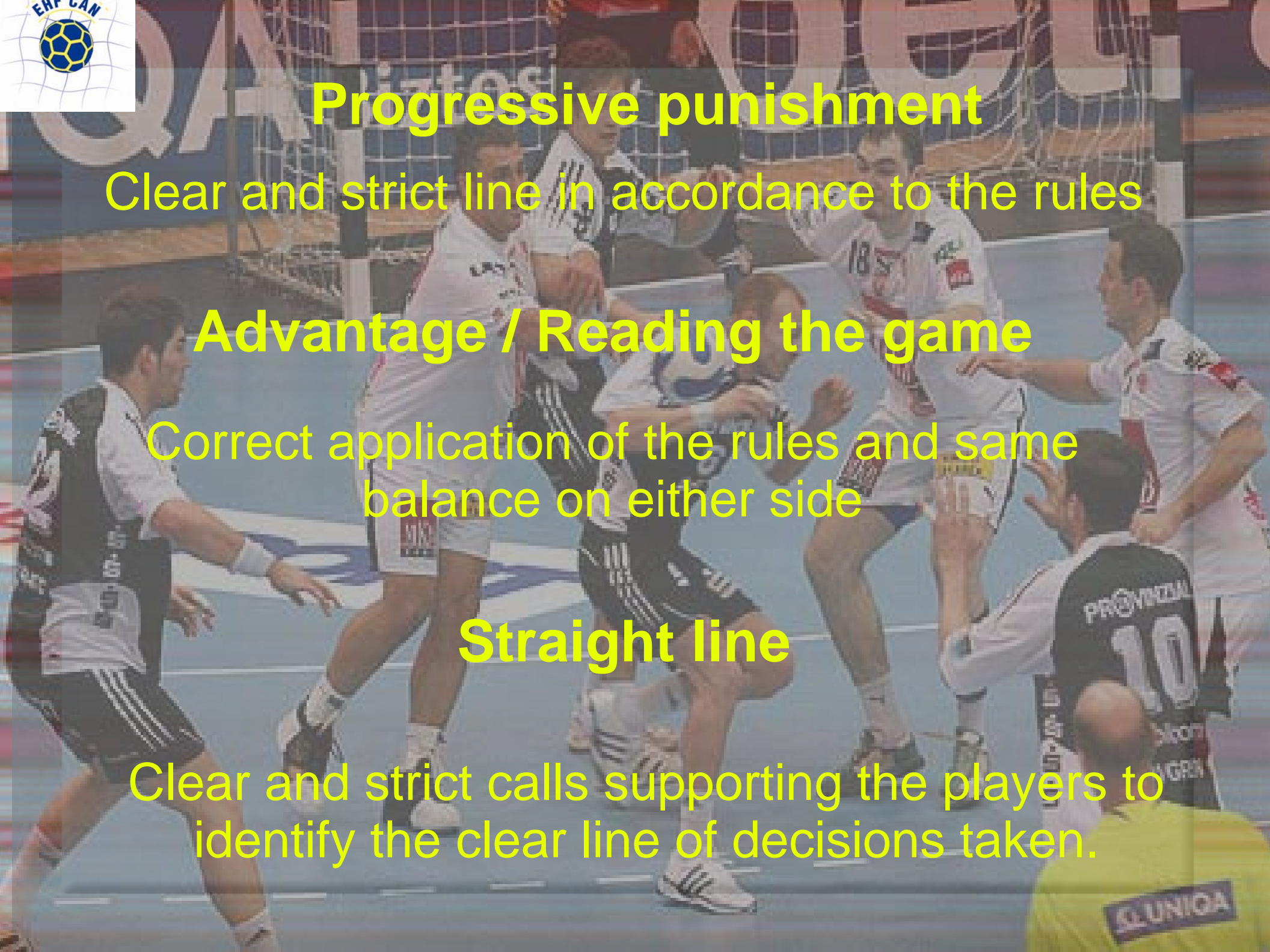
Clear and strict line in accordance to the rules

Advantage / Reading the game

Correct application of the rules and same balance on either side

Straight line

Clear and strict calls supporting the players to identify the clear line of decisions taken.



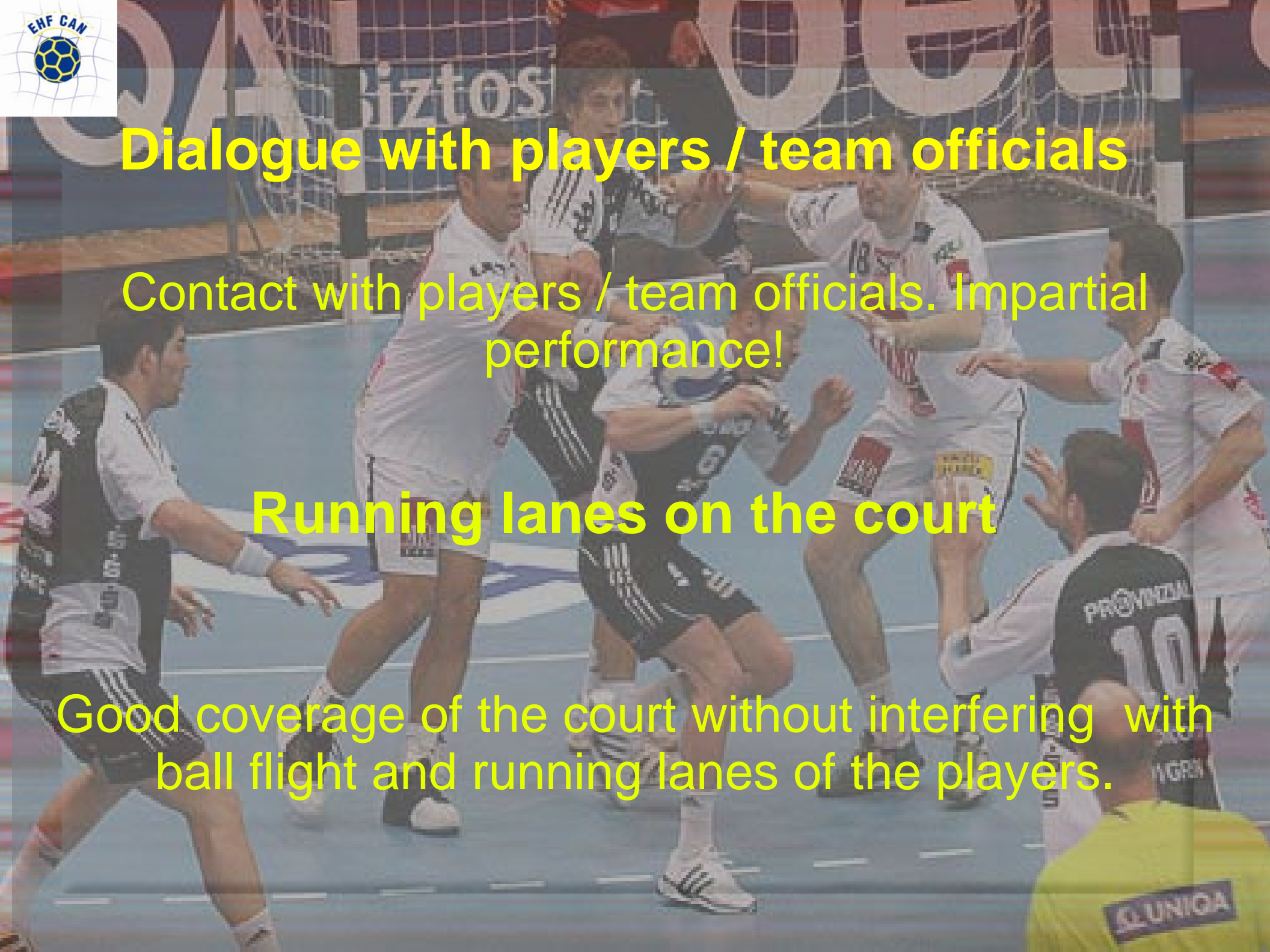


Dialogue with players / team officials

Contact with players / team officials. Impartial performance!

Running lanes on the court

Good coverage of the court without interfering with ball flight and running lanes of the players.





Fast throw-off

Correct execution according to both the rules of the game and the idea of the play.

Cooperation with the table

Signals and mutual assistance. Clear calls on punishments. Continuous contact.





Ratings

Poor..... Many mistakes taking influence on the result of the game, loss of control.

Acceptable..... Many mistakes, no influence on the result of the game, little control

Average..... Some mistakes, regular control





Ratings

Good..... Few mistakes, good control

Very good..... Almost no mistakes, very good control

Excellent..... Practically perfect

